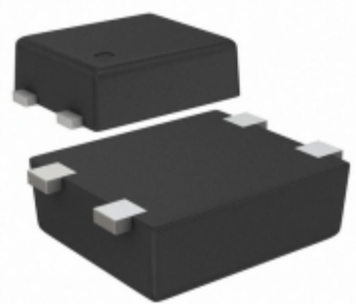


## S-80155BLPF-JFGTFG



**SII** SII Semiconductor Corporation

**Part Number:** [S-80155BLPF-JFGTFG](#)  
**Manufacturer:** [SII Semiconductor Corporation](#)  
**Description:** IC VOLT DETECTOR 5.5V SNT-4A  
**Data sheet:** [S-801 Series](#)

**RoHS Status:** Lead free / RoHS Compliant  
**Ship From:** Hong Kong  
**Shipment Way:** DHL/Fedex/TNT/UPS/EMS

Images are for reference only.  
 See Product Specifications for product details.  
**Buy S-80155BLPF-JFGTFG with confidence from Component-World.HK, 1 Year Warranty**

[Request For Quotation](#)

### PRODUCT PARAMETER

<b>Part Number</b>	S-80155BLPF-JFGTFG	<b>Manufacturer</b>	<a href="#">SII Semiconductor Corporation</a>
<b>Description</b>	IC VOLT DETECTOR 5.5V SNT-4A	<b>Lead Free Status / RoHS Status</b>	Lead free / RoHS Compliant
<b>Quantity Available</b>	5703 pcs	<b>Data sheet</b>	<a href="#">S-801 Series</a>
<b>Category</b>	<a href="#">Integrated Circuits (ICs)</a>	<b>Voltage - Threshold</b>	5.5V
<b>Type</b>	Voltage Detector	<b>Supplier Device Package</b>	SNT-4A
<b>Series</b>	S-801	<b>Reset Timeout</b>	65 ms Minimum
<b>Reset</b>	Active Low	<b>Packaging</b>	Tape & Reel (TR)
<b>Package / Case</b>	4-SMD, Flat Leads	<b>Output</b>	Push-Pull, Totem Pole
<b>Operating Temperature</b>	-40°C ~ 85°C (TA)	<b>Number of Voltages Monitored</b>	1
<b>Mounting Type</b>	Surface Mount	<b>Moisture Sensitivity Level (MSL)</b>	1 (Unlimited)
<b>Lead Free Status / RoHS Status</b>	Lead free / RoHS Compliant	<b>Detailed Description</b>	Supervisor Push-Pull, Totem Pole 1 Channel SNT-4A

Component-World.com is a Reliable Stocking Distributor of Electronic Components. We specialize in all SII Semiconductor Corporation series electronic components. We have 5703 pieces of SII Semiconductor Corporation S-80155BLPF-JFGTFG in stock available now. Request a quote from electronics components distributor at Component-World.com, our sales team will contact you within 24 hours.  
 RFQ Email: [info@Components-World.com](mailto:info@Components-World.com)

### RELATED PRODUCTS

	<b>Part#:</b> <a href="#">S-80155ALPF-JBGTFU</a> <b>Description:</b> IC VOLT DETECTOR 5.5V SNT-4A	<b>Manufacturers:</b> <a href="#">SII Semiconductor Corporation</a>	<a href="#">RFQ</a>
	<b>Part#:</b> <a href="#">S-80155ANPF-JDGTFG</a> <b>Description:</b> IC VOLT DETECTOR 5.5V SNT-4A	<b>Manufacturers:</b> <a href="#">SII Semiconductor Corporation</a>	<a href="#">RFQ</a>
	<b>Part#:</b> <a href="#">S-80155BLPF-JFUTFU</a> <b>Description:</b> IC VOLT DETECTOR 5.5V SNT-4A	<b>Manufacturers:</b> <a href="#">SII Semiconductor Corporation</a>	<a href="#">RFQ</a>
	<b>Part#:</b> <a href="#">S-80155CLPF-JJGTFU</a> <b>Description:</b> IC VOLT DETECTOR 5.5V SNT-4A	<b>Manufacturers:</b> <a href="#">SII Semiconductor Corporation</a>	<a href="#">RFQ</a>
	<b>Part#:</b> <a href="#">S-80155CLPF-JJGTFG</a> <b>Description:</b> IC VOLT DETECTOR 5.5V SNT-4A	<b>Manufacturers:</b> <a href="#">SII Semiconductor Corporation</a>	<a href="#">RFQ</a>
	<b>Part#:</b> <a href="#">S-80155ALMC-JBGT2G</a> <b>Description:</b> IC VOLT DETECTOR 5.5V SOT23-5	<b>Manufacturers:</b> <a href="#">SII Semiconductor Corporation</a>	<a href="#">RFQ</a>
	<b>Part#:</b> <a href="#">S-80155ANPF-JDGTFU</a> <b>Description:</b> IC VOLT DETECTOR 5.5V SNT-4A	<b>Manufacturers:</b> <a href="#">SII Semiconductor Corporation</a>	<a href="#">RFQ</a>
	<b>Part#:</b> <a href="#">S-80155CLMC-JJGT2G</a> <b>Description:</b> IC VOLT DETECTOR 5.5V SOT23-5	<b>Manufacturers:</b> <a href="#">SII Semiconductor Corporation</a>	<a href="#">RFQ</a>
	<b>Part#:</b> <a href="#">S-80155BLPF-JFGTFU</a> <b>Description:</b> IC VOLT DETECTOR 5.5V SNT-4A	<b>Manufacturers:</b> <a href="#">SII Semiconductor Corporation</a>	<a href="#">RFQ</a>
	<b>Part#:</b> <a href="#">S-80155BNPF-JHGTFG</a> <b>Description:</b> IC VOLT DETECTOR 5.5V SNT-4A	<b>Manufacturers:</b> <a href="#">SII Semiconductor Corporation</a>	<a href="#">RFQ</a>
	<b>Part#:</b> <a href="#">S-80155BNMC-JHGT2U</a> <b>Description:</b> IC VOLT DETECTOR 5.5V SOT23-5	<b>Manufacturers:</b> <a href="#">SII Semiconductor Corporation</a>	<a href="#">RFQ</a>
	<b>Part#:</b> <a href="#">S-80155BLMC-JFGT2U</a> <b>Description:</b> IC VOLT DETECTOR 5.5V SOT23-5	<b>Manufacturers:</b> <a href="#">SII Semiconductor Corporation</a>	<a href="#">RFQ</a>
	<b>Part#:</b> <a href="#">S-80155ANMC-JDGT2G</a> <b>Description:</b> IC VOLT DETECTOR 5.5V SOT23-5	<b>Manufacturers:</b> <a href="#">SII Semiconductor Corporation</a>	<a href="#">RFQ</a>
	<b>Part#:</b> <a href="#">S-80155ALPF-JBGTFG</a> <b>Description:</b> IC VOLT DETECTOR 5.5V SNT-4A	<b>Manufacturers:</b> <a href="#">SII Semiconductor Corporation</a>	<a href="#">RFQ</a>
	<b>Part#:</b> <a href="#">S-80155BNPF-JHGTFU</a> <b>Description:</b> IC VOLT DETECTOR 5.5V SNT-4A	<b>Manufacturers:</b> <a href="#">SII Semiconductor Corporation</a>	<a href="#">RFQ</a>
	<b>Part#:</b> <a href="#">S-80155BNMC-JHGT2G</a> <b>Description:</b> IC VOLT DETECTOR 5.5V SOT23-5	<b>Manufacturers:</b> <a href="#">SII Semiconductor Corporation</a>	<a href="#">RFQ</a>
	<b>Part#:</b> <a href="#">S-80155ALMC-JBGT2U</a> <b>Description:</b> IC VOLT DETECTOR 5.5V SOT23-5	<b>Manufacturers:</b> <a href="#">SII Semiconductor Corporation</a>	<a href="#">RFQ</a>
	<b>Part#:</b> <a href="#">S-80155ANMC-JDGT2U</a> <b>Description:</b> IC VOLT DETECTOR 5.5V SOT23-5	<b>Manufacturers:</b> <a href="#">SII Semiconductor Corporation</a>	<a href="#">RFQ</a>
	<b>Part#:</b> <a href="#">S-80155CLMC-JJGT2U</a> <b>Description:</b> IC VOLT DETECTOR 5.5V SOT23-5	<b>Manufacturers:</b> <a href="#">SII Semiconductor Corporation</a>	<a href="#">RFQ</a>
	<b>Part#:</b> <a href="#">S-80155BLMC-JFGT2G</a> <b>Description:</b> IC VOLT DETECTOR 5.5V SOT23-5	<b>Manufacturers:</b> <a href="#">SII Semiconductor Corporation</a>	<a href="#">RFQ</a>

### Related keywords for S-80155BLPF-JFGTFG

SII Semiconductor Corporation S-80155BLPF-JFGTFG	S-80155BLPF-JFGTFG distributor	S-80155BLPF-JFGTFG supplier	S-80155BLPF-JFGTFG price
	S-80155BLPF-JFGTFG download datasheet	S-80155BLPF-JFGTFG datasheet	S-80155BLPF-JFGTFG stock
buy S-80155BLPF-JFGTFG	SII Semiconductor Corporation S-80155BLPF-JFGTFG		